

SECOND DEGREE ACCELERATED PROGRAM



**BE
THE
CHANGE**

**YOU ARE
ESSENTIAL.**

Learn Here. **GO ANYWHERE.**



YOU are essential.

Fast track into a nursing career.

Get on the fast track to earn a BSN in as little as 13 or 18 months! Mount Carmel College of Nursing (MCCN) is a private, specialized institution of higher education offering these degrees: Bachelor of Science in Nursing (BSN) in four programs — Traditional (four-year), Second Degree Accelerated Program (13) (SDAP 13), Second Degree Accelerated Evening/Weekend Program (18) (SDAP Evening/Weekend 18), Advanced Placement Program (APP) and Online BSN-RN Completion; Master of Science (MS) in three tracks — Nursing leadership-Clinical Operations, Family Nurse Practitioner (FNP), and Adult-Gerontology Acute Care Nurse Practitioner (AG-ACNP); Post Graduate Certificate Programs including Online Nursing Education; and Doctor of Nursing Practice Program (DNP).

Our Mission: In the spirit of the Catholic tradition, we welcome a diverse population of students from all faiths, to prepare them academically and professionally as competent and compassionate nurse leaders, who are lifelong learners, and who possess the moral courage to continuously promote the health of individuals and communities.



Among what you'll find at www.mccn.edu

- . SDAP Course Descriptions
- . SDAP Curriculum
- . SDAP Tuition and Fees
- . Financial aid information
- . Application

Learn Here. GO ANYWHERE.

**Do you want to
realize your
potential
in the nursing
profession?
Never has there
been a better
time to pursue a
rewarding career
as a registered
nurse.**

40+



Mount Carmel College of Nursing (MCCN) has designed a program for students who have earned a bachelor's or higher degree and would now like to pursue a career in nursing.

Those who meet admission requirements and have completed all prerequisite courses may earn a Bachelor of Science in Nursing (BSN) degree in just 13 or 18 months. MCCN's Second Degree Accelerated Programs (SDAP) prepare graduates to take the National Council Licensure Examination for Registered Nurses (NCLEX-RN) following graduation.



If you have always dreamed of an exciting, rewarding career in nursing, have found that your existing degree does not afford the job prospects or career growth you desire, or are simply ready for the next step in your life, one of MCCN's SDAP is right for you.

Both the Second Degree Accelerated 13 month Program (SDAP-13) and Second Degree Accelerated 18 month Program (SDAP-18) offer the same classroom and clinical nursing courses as our traditional BSN program, but are offered in a compressed time frame. In the SDAP-13, full-time students begin the program in early January of one year and earn a BSN in just 13 months, by early February of the following year. Classes, labs and clinicals for SDAP-13 are Monday-Friday. Classes, labs and clinicals for SDAP-18 are in the evenings on weekdays and weekends. Our SDAP-18 enables students to earn a BSN in 18 months while maintaining part-time employment. SDAP-18 begins once a year, in August.





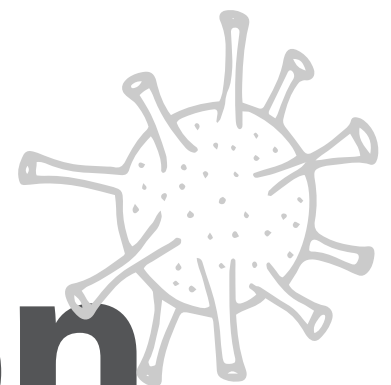
Admission Criteria

- Completed baccalaureate or higher degree in a field other than nursing from a regionally accredited institution. The degree must be conferred by start of program.
- Recommended 3.0 cumulative grade point average (GPA) from all colleges or universities attended
- Interview for qualified applicants (at the discretion of the admissions committee)
- TOEFL score of 550 (paper based), 213 (computer based) or 79 (internet based) for ESL students (Mount Carmel College of Nursing does not issue an I-20).

Required Documents

- Application
- Official transcripts from all high schools, colleges or universities attended
- Essay (In 300 words or less, answer the following question: As a future nurse, what do you think you will contribute to nursing?)
- Activities/interest resume
- WES evaluation (if applicable)
- TOEFL scores (if applicable)
- Copy of Visa or Resident card (if applicable)

Admission criteria





Prerequisite Courses for Second Degree Accelerated Programs

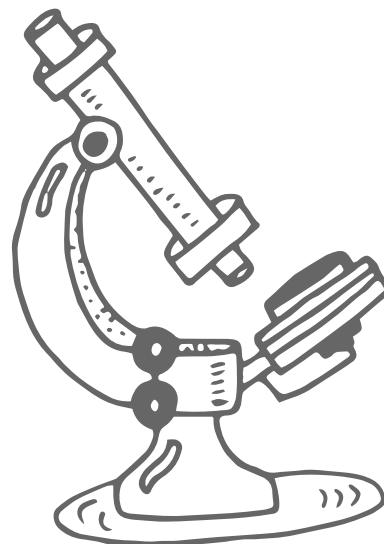
Prerequisites are not required to be completed prior to submitting the application but must be completed prior to starting the program. A grade of "C" or better is required for prerequisite courses. A "C-" or below will not be accepted.

Anatomy and Physiology I and II
Microbiology
Organic Biochemistry
Human Growth & Development
General Psychology
Statistics*
Human Nutrition*

**Provisional admission may be granted to students without transcribed credit for Statistics or Human Nutrition; the required courses will be integrated into the plan of study*

Additional materials to be submitted after acceptance and prior to starting the program:

- Current professional-level CPR Certification (American Heart Association)
- Completed institutional health requirements
- Criminal background check (state and federal)



$$\operatorname{tg} \alpha = \frac{\sin \alpha}{\cos \alpha}$$

1. How do I know if nursing is for me? Nursing is a profession that combines the art of caring and compassion with science and health-related technologies. Successful nursing students need good study habits, excellent critical thinking and problem-solving skills, confidence, determination, and an eagerness to learn. Nurses today have flexibility in their working schedules and more options than ever before about what kind of work they do, where they do it, and when they work. A nursing career is filled with endless personal and professional rewards.

2. Why has this program been established? There are many different educational programs for nursing. The Second Degree Accelerated Programs are designed to admit non-nurse baccalaureate (or higher) graduates and provide the education necessary to complete the BSN and the qualifications to take the licensing exam to become a Registered Nurse (RN).

3. Who is eligible to apply for this program? College graduates with a baccalaureate degree (or higher) who have an interest in and aptitude for a career as a professional nurse may be eligible for this program. Applicants must possess a baccalaureate degree in a field other than nursing and have a recommended cumulative GPA of 3.0 or greater. The necessary prerequisite courses must be completed before program entry.

4. I am a non-immigrant international student studying in the United States. Am I eligible to apply to the Second Degree Accelerated Program? Mount Carmel College of Nursing is not an I-20 granting institution. We can accept international students only if they are Permanent Residents or do not require I-20 documentation.

5. Will there be an Orientation for students accepted to the program? There will be an Orientation in December for Spring start and July for Fall start for students accepted into the program. Attendance at Orientation is mandatory in order to start the program.

6. Is financial aid available? Yes, financial aid information is available at www.mccn.edu/financialaid.

7. What is the length of this program? Second Degree Accelerated Program (13):
This program is 13 months

Second Degree Accelerated Evening Weekend Program (18): This program is 18 months

8. How is all of the information covered in such a short period of time? Course and nursing clinical sessions are blocked to provide a more efficient method of delivery in a shorter period of time.

9. How can the necessary clinicals be covered in a short period of time? The College has scheduled clinical courses from the sophomore, junior and senior years of the regular prelicensure curriculum, along with other required courses to offer the program in a short period of time.

SDAP questions and answers

10. When do classes meet? Second Degree Accelerated Program (13) Schedule: Classes, labs and clinicals are Monday-Friday. Evening/weekend classes/labs may be required. Classes are in a blended format.

Second Degree Accelerated Evening Weekend Program (18): Classes, labs and clinicals are evenings on weekdays and on weekends. Classes are in a blended format.

11. How many hours should I plan for class and clinical activities per week? The accelerated pace of this program will require up to 40 hours per week in class, lab and clinical.

12. How much study time should I plan for each week? Students should plan for at least 20-30 hours outside of class and clinical time for course assignments and review of class materials.

13. Will I have classes in the evening or on weekends? Students must have flexible schedules that will accommodate evening or weekend classes and clinicals for both programs.

14. When are the breaks in the program? There are six holidays throughout the program, plus a short break in April and two week breaks in August and Christmas through the New Year.

15. Can I take family vacations during the program? Vacations can only be taken during the scheduled breaks.

16. Will I need a computer in order to complete the program? A laptop or PC and reliable internet required for the program.

17. Who teaches the courses and where? Mount Carmel College of Nursing faculty teach all theory courses. Clinical experiences are planned at one of the four Columbus hospitals in the Mount Carmel Health System or local health care facilities. Clinical activities have oversight by College faculty, sometimes with involvement of nurse preceptors.

18. Do I have to take two semesters of anatomy and physiology as prerequisites? We have indicated the prerequisite as "Anatomy & Physiology I & II" because that is the format in which Mount Carmel offers these two courses. Many schools teach Anatomy in one term and Physiology in another term.



However, in either case you would need two courses in order to cover the entire body systems. If there is more than one choice at your institution, choose the course for science majors.

19. Must I complete the prerequisite courses by the application deadline? No. You may submit your applications to Mount Carmel College of Nursing while in the process of completing prerequisite courses. You will be asked to communicate to us the prerequisite courses completed and the courses you still need to complete.

You are required to have all prerequisites completed by the time you begin the program. You can be admitted pending successful completion of all prerequisites maintaining a recommended cumulative GPA of 3.0 or greater.

20. How do I know what courses will transfer from my previous degree(s)? Transcript evaluation is available for a \$25 fee. Complete the Transcript Evaluation Request form which can be found on the website. Arrange for official college transcripts to be sent to MCCN. The completed evaluation will be emailed to you, otherwise Mount Carmel College of Nursing will complete a transfer credit evaluation as part of your application process.

21. What type of equipment will I need to purchase?

Students will need to purchase a lab coat, student uniform, dual-head stethoscope, penlight, bandage scissors and a watch with second hand. Information regarding where to purchase these items will be provided to students after admission to the program.

23. How many credit hours are required to graduate?

The graduation requirement is 120 semester hours. You will complete 79 semester credits at Mount Carmel College of Nursing, plus the prerequisite credit to equal the total 120 required semester hours.

24. What degree will I earn? Upon completion of the program, Mount Carmel College of Nursing will confer the Bachelor of Science in Nursing (BSN) degree.

25. When I graduate am I then a Registered Nurse (RN)?

No. Graduates must pass the licensing exam to become an RN. Oversight for this exam is through the Ohio Board of Nursing. We will provide graduates with details about scheduling the NCLEX-RN exam.

26. Can I work while enrolled in this program?

Second Degree Accelerated 13 month Program:

Because of the number of classroom and clinical hours required in the SDAP-13, enrolled students are strongly advised NOT to work, given the rigor associated with completing degree requirements.

Second Degree Accelerated 18 month Program:

Students enrolled in the SDAP-18, maintaining a part-time work schedule is possible because classes are offered during evening and weekends, and the delivery of classes are both online and face-to-face.

27. What happens if I must withdraw from the program for any reason?

Only those students who can commit to the program and who are totally serious about finishing with their cohort should start the program. A student unable to continue for any reason will be dropped from the program and considered for placement in the traditional undergraduate pre-licensure program. There is no option for re-entry into the Second Degree Accelerated Program.

28. How much does SDAP cost? For information on pricing, visit mccn.edu

Get on the fast track to earn a BSN in as little as 13 or 18 months!

Second Degree Accelerated Program Curriculum and Course Schedule



Spring Semester				Summer Session				Fall Semester				Spring
NURS 284 HEALTH ASSESSMENT	NURS 295 FOUNDATIONS	NURS 295	NURS 398 PSYC	NURS 497 PEDS	NURS 397 OB	NURS 399 MEDSURG I	NURS 495 ACUTE	NURS 498 TRANSITIONS	NURS 496 OLDER ADULT	ATT REVIEW		
HLTH 282 CULTURAL COMPETENCE	NURS 3540 SEMINAR	NURS 3540	NURS 391 NURS RESEARCH & EBP	HUMN 390 ETHICS	NURS 492 ADVANCED CONCEPTS		NURS 491 COMMUNITY NURS	HLTH 496 HLTH POLICY	NURS 3528 CAPSTONE SEMINAR			
NURS 296 PHARMACOLOGY		NURS 296				NURS 3490 ATI REVIEW						
SCIE 290 PATHO I	SCIE 291 PATHO II	SCIE 291										

Spring Semester				Summer Session				Fall Semester				Spring
NURS 284 HEALTH ASSESSMENT	NURS 295 FOUNDATIONS	NURS 295	NURS 497 PEDS	NURS 397 OB	NURS 398 PSYC	NURS 399 MEDSURG I	NURS 496 OLDER ADULT	NURS 495 ACUTE	NURS 498 TRANSITIONS	ATT REVIEW		
HLTH 282 CULTURAL COMPETENCE	NURS 3540 Seminar	NURS 3540	HUMN 390 ETHICS	NURS 391 NURS RESEARCH & EBP	NURS 492 ADVANCED CONCEPTS		NURS 491 COMMUNITY NURS	HLTH 496 HLTH POLICY	NURS 3528 CAPSTONE SEMINAR			
NURS 296 PHARMACOLOGY		NURS 296				NURS 3490 ATI REVIEW						
SCIE 290 PATHO I	SCIE 291 PATHO II	SCIE 291										

sample

■ Break

■ Nursing clinical course

■ Nursing non-clinical course

■ Non-nursing course

■ Science course

Mandatory Orientation

Date: TBD

Holiday

Martin Luther King, Jr. Day
Good Friday
Memorial Day
Independence Day observed
Labor Day
Thanksgiving
Martin Luther King, Jr. Day

SDAP 8/21/21



Never has there
been a better
time to pursue a
rewarding career
as a registered
nurse.

Center for Innovative Learning

Our state-of-the-art Center for Innovative Learning and our Simulation Center provide students with an unparalleled learning experience.

Imagine lifelike human simulators that breathe, blink and bleed.

Imagine intense health care learning scenarios — the timing, the intuition and instincts, the life-saving, split-second decisions.



Your personal and academic growth is our top priority. You will feel comfortable in our family atmosphere and encouraged by specialized academic assistance. Supported by our accessible, knowledgeable and highly credentialed faculty, you will benefit from our graduation and retention rates that are among the highest in the state.

hands on learning



SIM



i-Innovate Student Success Initiative



i-INNOVATE

Advancing technology to lead healthcare today



i-Innovate is a campus-wide initiative enabling MCCN to provide equal access technological opportunities to all MCCN students. MCCN collaborates with Apple on this student success initiative where faculty members, staff and students have access to a new Apple iPad, Apple Pencil, smart keyboard, a protective case and AppleCare+.

The device and its accompanying accessories are property of MCCN. Students will be granted full use of them as both an educational tool and a personal device during their time at MCCN. MCCN is committed to preparing students academically and professionally as competent and compassionate nurse leaders both in and out of the classroom, which is why this is more than just students and faculty purchasing an iPad. This student success initiative is also a significant investment in our classrooms and common spaces, including the installation of Apple TVs and improved collaboration spaces across campus.

i-Innovate FAQ

Who will participate in i-Innovate?

All MCCN faculty and students will have access to the technology.

What is included in the iPad equipment package?

Apple iPad
Apple Pencil
Smart Keyboard
Protective Case
AppleCare+

When will I receive my device?

All students will receive their devices prior to the start of their academic year.

Will there be device training for students?

Yes, all students will participate in device training for the program.

What are the benefits of using an MCCN issued iPad?

Every MCCN iPad is preloaded with unique apps that faculty and students can use to augment professional practice and transform the workforce. If the student chooses to pay the remaining balance on their iPad by the end of their career at MCCN, they can take it into practice with them and use it as a tool when working directly with patients. Additional benefits include:

- Improved collaboration between faculty members and students
- Personalized learning
- Greater connectivity and flexibility
- Better preparation to succeed in our progressively digital world

Student Services

We offer several student support options to help you reach your dreams!

Whether you need help inside or outside of the classroom, we're here for you!

Student Accessibility Services

Accessibility Services provides support for students with disabilities or other life situations. Our goal is to provide students with disabilities an equal opportunity to competitively pursue their college education. Reach out to accessibility@mccn.edu to learn more about any services that we offer.

Behavioral Health Services

We are aware of the many pressures students face every day. To assist with these challenges, we offer on-campus professional counseling services to students provided by a dedicated counselor. Email counselor@mccn.edu to learn more. Additionally, we offer a 24/7 option to support students during all times. This resource can be accessed through carebridge.

Care Team

The Care Team is a team made up of multiple areas across the College that helps to coordinate support for students experiencing personal or academic. The team serves as the centralized resource and advisory body to address concerning behaviors of members of the MCCN community. To contact the Care Team, email CareTeam@mccn.edu.

Student Success Center

The Student Success Center offers academic tutoring, paper reviews, and study sessions for all students. Peer tutors and faculty coaches are available to meet in-person or online throughout each semester or term. Contact academicresources@mccn.edu for more details.



Applying for Aid and Scholarship

Questions about Financial Aid?

614.234.1842

E-mail: financialaid@mccn.edu

visit our website at

www.mccn.edu

1 Determining Financial Aid and Eligibility

The total cost of attending Mount Carmel College of Nursing will vary from year to year. The total cost of attendance includes tuition, fees, and the cost of books, uniforms, transportation and personal expenses. Only tuition and fees are direct expenses, but indirect expenses are calculated into the cost of attendance.

The "Expected Family Contribution" (EFC), is arrived at using a government formula that takes into consideration the following: Parents' and student's total income, or student's and spouse's total income, number of dependents, number in college, and other assets.

A student's eligibility for loans, grants or scholarships is determined by the following formula:

Total Cost of Attending Mount Carmel

Minus (-) Expected Family (Student and parent or spouse) Contribution (EFC)

Equals (=) Eligibility for need-based financial aid

2 Applying For Financial Aid

To be considered for Federal, State, and Institutional grants, loans, and scholarships, a student must submit a Free Application for Federal Student Aid (FAFSA). The Mount Carmel College of Nursing FAFSA code is 030719. Scholarships are available for accepted and confirmed students.

The student may receive requests for further documentation. All requested materials must be returned to the MCCN Office of Financial Aid within 30 days to avoid possible loss of financial aid. The student will receive a financial aid award letter after all forms are complete. A student may file an appeal at any time during the academic year if there is a significant change in his/her family's income. Contact the Office of Financial Aid. The student must resubmit a new FAFSA or renewal FAFSA each year in order to reapply for financial aid for the next academic year. For questions about financial aid, please call 614.234.1842 or e-mail us at financialaid@mccn.edu.

Questions about Fees?

614.234.2167 or
E-mail: bursar@mccn.edu
or visit our website at
www.mccn.edu

3 College Payment Plan

- The College Payment Plan allows the student or responsible party the convenience of spreading the tuition and fees expense over a number of months.

Tuition and fees for one semester may be included in the payment plan.

- Pending financial aid is taken into consideration when calculating monthly payments.
- Changes to the payment plan may be made with the approval of the MCCN Bursar.

Tuition and fees can be paid monthly over the duration of a semester with no finance charges or interest. Information regarding this plan is available from the MCCN Bursar Office.

Contact

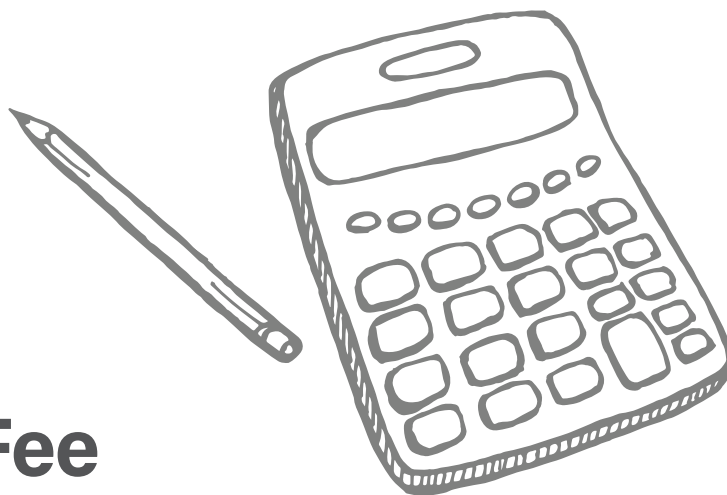
MCCN Bursar Office with questions about the College Payment Plan, 614.234.2167 or email bursar@mccn.edu

Financial Aid Calendar

- October
Complete the FAFSA or FAFSA Renewal form on the web at www.studentaid.gov

Deadlines for Submitting FAFSA:

- April 15 for students entering for the Summer Semester (including APP)
- July 1 for students entering for the Fall Semester and current SDAP Students
- November 3 for SDAP students entering for the Spring Semester



Fee Payment

Payment due dates:

Payment is due the Monday prior to the start of the semester. Accounts with balances and no payment plan may be subject to a \$150 late fee.

Payment Methods

Three payment methods are available:

(1) Payment may be made by check or money order made payable to Mount Carmel College of Nursing. Include on the check or money order the student's name and student ID number. If mailing the payment, address it to:

Mount Carmel College of Nursing, Bursar Office
127 South Davis Avenue, Columbus, OH 43222-1504

(2) Payment may be made in person in the Mount Carmel College of Nursing Business Office on the second floor of Marian Hall. The office is open from 8 a.m. to 4:30 p.m. Monday through Friday, excluding holidays. The office can accept checks, or money orders. Credit card payments are accepted online only.

(3) Payment may be made by credit or debit card or by electronic check online through the student CARMELink account using the Cashnet option in the Bursar Office and Account Information section. American Express, Discover, Visa and MasterCard are accepted and a merchant processing fee of 2.90% will be assessed to the payor on every credit card payment. There is no processing fee for electronic check (ACH) payments.

Financial Aid

- Financial aid that is approved or pending may be deducted from the bill.
- Federal Stafford and PLUS (parent) loans will be credited to the student's account when they are electronically transmitted (EFT). Student is notified of the receipt of the funds by the Bursar Office.
- Financial aid is credited to them student's account as it is received by the College.
- When a credit balance occurs, the student will receive a refund of that amount.
- If financial aid deadlines are not met, the student is responsible for paying the entire balance due.

Scholarship Opportunities

Institutional Merit Scholarships

Mount Carmel College of Nursing offers financial assistance to top students through merit-based scholarships. Unlike loans, these Achievement Awards do not need to be repaid.

MCCN Book Grant

The Book Grant, through generous donated support, is intended to provide additional funding for students with exceptional need.

Mount Carmel College of Nursing Endowed Scholarships

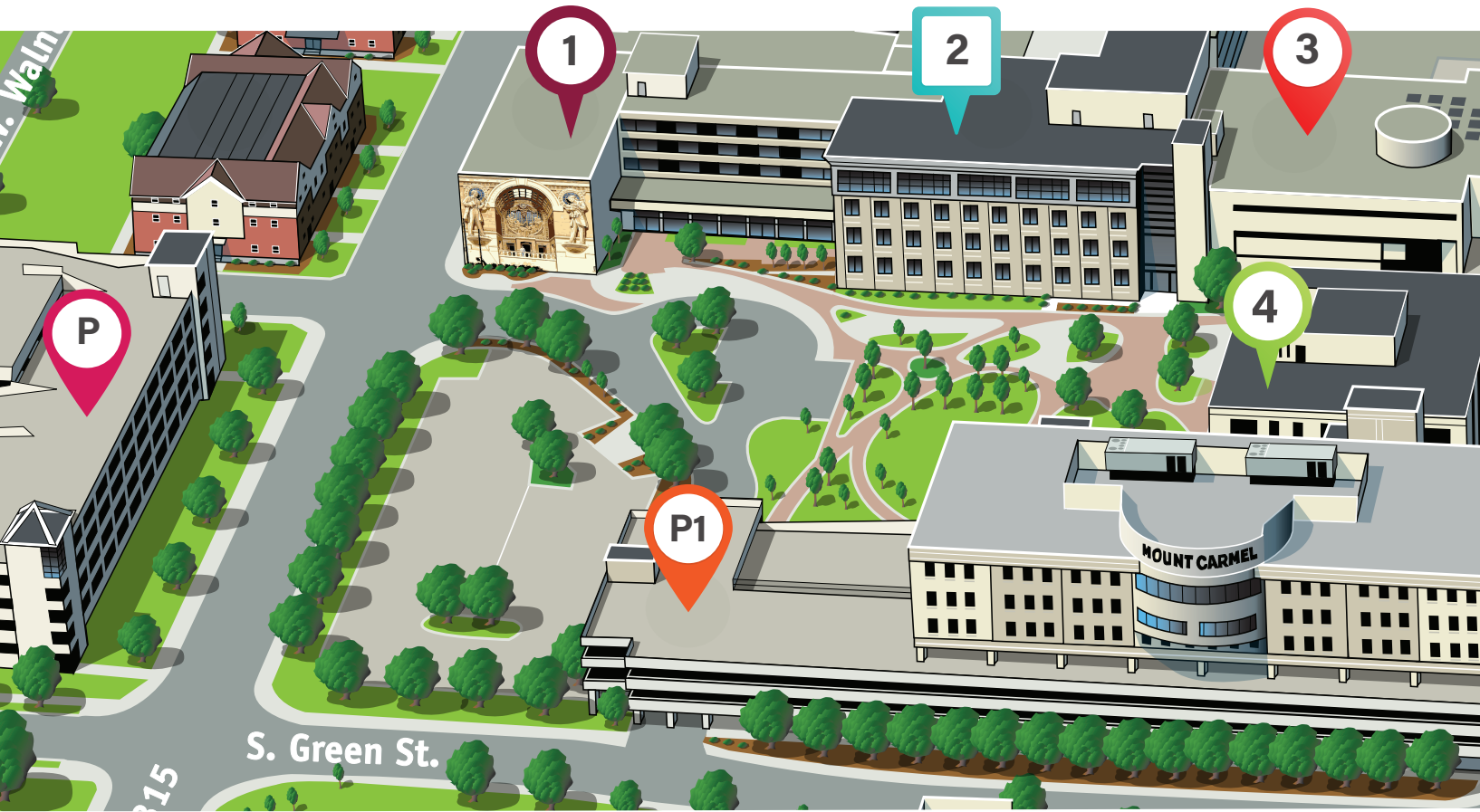
Through generous support of donors, MCCN is privileged to offer numerous scholarship opportunities to our students. These scholarships are funded directly from donor gifts and awarded through an annual application process.

Outside/Non-MCCN Scholarships

Many scholarships and grants are offered by private sources, such as fraternal and religious organizations, labor unions, professional associations, social groups, and ethnic associations.

For additional information, visit www.mccn.edu or use this QR code to access our scholarship page.





**Visit one
of our
open house
sessions or
Register
online
at mccn.edu**






Program start:

Visit our website for the most up to date information.





MOUNT CARMEL COLLEGE OF NURSING MAP KEY

-  Marian Hall
-  Center for Learning and Education (CLE)
-  Medical Staff Building & Auditorium
-  Center for Innovative Learning and Healthy Living Center
-  Visitor and Employee Parking
-  Student Parking

From SR-315, Traveling South

- Exit at Town/Rich St.
- Turn right on Town St.
- College on right past Green St.
- See campus map for parking

From I-71 or SR-315, Traveling North

- Take SR-315 north to Town/Rich St. exit
- Turn left on Town St.
- College on right past Green St.
- See campus map for parking

From I-70, Traveling East

- Exit at SR-315 North (exit 99B)
- Travel north on SR-315 to the Town/Rich St. exit
- Turn left on Town St.
- College on right past Green St.
- See campus map for parking

From I-70, Traveling West

- Exit at Town/Rich St. (exit 99C)
- Turn left on Town St.
- College is on right past Green St.
- See campus map for parking





Questions about MCCN Programs or Admissions at Mount Carmel College of Nursing?

Call our Office of Admissions or visit one of our open house sessions www.mccn.edu/admissions/visit-us

Office of Admissions

127 South Davis Avenue, Columbus, Ohio 43222

614.234.4CON Fax: 614.234.5427

Email: admissions@mccn.edu

www.mccn.edu

Mount Carmel College of Nursing is accredited by The Higher Learning Commission. The baccalaureate degree program in nursing, master's degree program in nursing, Doctor of Nursing Practice program and post-graduate APRN certificate program at Mount Carmel College of Nursing is accredited by the Commission on Collegiate Nursing Education, 655 K Street NW, Suite 750, Washington, DC 20001, 202-887-6791. Mount Carmel College of Nursing is an equal opportunity education institution. The master's program is authorized by the Ohio Department of Higher Education. The master's program has earned nursing accreditation with the Commission on Collegiate Nursing Education (CCNE) through December 31, 2022.



Mount Carmel College of Nursing is committed to safety and security on campus and is in compliance with the Jeanne Clery Disclosure of Campus Security Policy and Campus Crime Statistics Act. The Annual Security Report (ASR) and Fire Safety Report includes statistics for the previous three years on reported crimes occurring on MCCN and FMC campuses and on public property within or immediately adjacent to and accessible from each campus. This report can be found at catalog.mccn.edu/index.php under security information. The report also includes institutional policies concerning campus security and fire safety. A printed copy of the report is available at no charge by contacting the MCCN Compliance Officer at compliance@mccn.edu.

BE THE CHANGE.

Learn Here. **GO ANYWHERE.**



MOUNT CARMEL
College of Nursing





Take the next step toward your second degree and pursue a career in nursing. Get on the fast track to earn a BSN in as little as 13 or 18 months.

Begin your career at Mount Carmel College of Nursing.
Where you are Essential.



MOUNT CARMEL
College of Nursing

127 South Davis Avenue, Columbus, Ohio 43222
614.234.4CON Fax: 614.234.5427 Email: admissions@mccn.edu
www.mccn.edu

Mount Carmel College of Nursing does not discriminate on the basis of race, creed, color, national origin (ancestry), religion, sex (including sexual harassment), veteran status, age (40 years old or more), weight, height, marital status (past, present, or future), sexual orientation, gender identity, genetic makeup/information, disability or any other class protected by law in the administration of its admission or academic policies, financial aid, scholarship program, or any other programs. The complete nondiscrimination notice and Title IX compliance contact information can be found at: www.mccn.edu/equity

© 2021 Mount Carmel College of Nursing. All Rights Reserved.

